



R.S. PARKER HOMES, LLC

336.841.6699

gretchen@rsparkerhomes.com

www.rsparkerhomes.com

LOCATION

19 Wexford Circle
Breckenridge
Thomasville

\$199,900

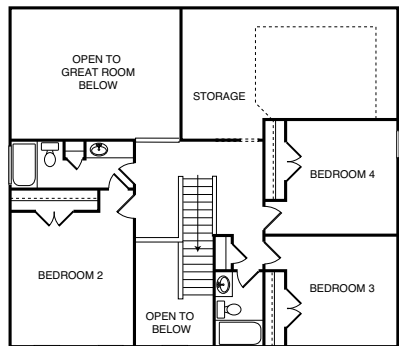
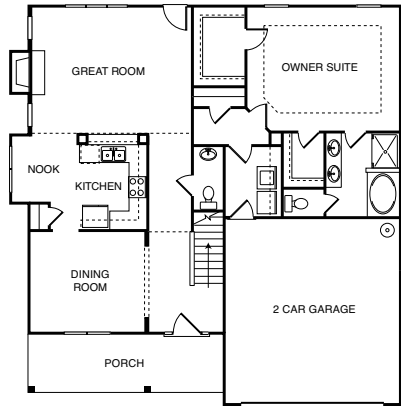
2250 sq. ft.

SPECIAL FEATURES

- Granite countertops in kitchen and full baths
- 9' ceilings first floor
- Bull nose edged corners
- Tray ceilings master bedroom
- Sitting area guest bedroom
- Unbeatable value – just minutes to downtown Greensboro

HBA PARTICIPATING MEMBERS

- Carpet Super Mart
- CPI Security Systems
- Duke Energy
- Fireside Hearth & Home
- Overhead Door Company
- Piedmont Natural Gas
- Stock Building Supply



DIRECTIONS

Interstate 85 South. Right on Finch Farm Road. Pass Colonial Country Club. Right at Breckenridge entrance. First left is Wexford Circle.